

Integrating Infant and Early Childhood Mental Health into the Certified Community Behavioral Health Clinic Model (CCBHC): A Toolkit for Action



ZERO TO THREE
Early connections last a lifetime

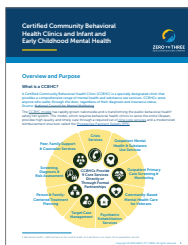
ZERO TO THREE's new toolkit is designed to support the integration of Infant and Early Childhood Mental Health (IECMH) into the Certified Community Behavioral Health Clinic (CCBHC) model. As the CCBHC model rapidly expands nationwide, it is transforming the public behavioral health system. Because CCBHCs are required to serve individuals across the lifespan, they offer a powerful and unique opportunity to thoughtfully integrate IECMH services and to build strong partnerships with the broader early childhood and mental health systems.

This toolkit aims to:

- Inform early childhood leaders and practitioners about the CCBHC model.
- Encourage leadership engagement in shaping IECMH service arrays and partnerships.
- Support CCBHC leaders — at both the state and practitioner levels — in connecting with the existing early childhood infrastructure and developing innovative approaches to integrating IECMH into the CCBHC model.

What's Included in the Toolkit?

This toolkit features three resources designed to bridge the IECMH and CCBHC fields, build capacity, and spark collaboration:



Certified Community Behavioral Health Clinics and Infant and Early Childhood Mental Health

Audience: Early childhood systems leaders, practitioners, and policy makers

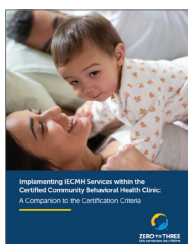
This brief reintroduces the CCBHC model and explains why infant and early childhood stakeholders should be actively involved in shaping integrated IECMH services and infrastructure.



Integrating Infant and Early Childhood Concepts into the Nine Certified Community Behavioral Health Clinic (CCBHC) Services

Audience: State and local leaders across infant and early childhood and CCBHCs

This table provides brief descriptions of the nine required core services under the CCBHC model. It highlights opportunities for state and local EC systems to partner with CCBHCs to improve service availability, access, quality, and outcomes for infants, young children, and their families, offering a practical framework for integration.



Implementing IECMH Services within the Certified Community Behavioral Health Clinic: A Companion to the Certification Criteria

Audience: State and local leaders involved in policy development for CCBHCs

This document supports CCBHC leadership capacity to provide services to individuals across the lifespan and integrate family-centered services by incorporating IECMH into the existing clinic infrastructure.

Additional resources specific to early childhood interventions and screening/assessment tools are included.